

Wednesday

04

MAY 2022

13:00 - 14:00

Register:  
[bit.ly/3rBt3O3](https://bit.ly/3rBt3O3)

## Study in France

## France - South Africa Scholarship Programme



AMBASSADE  
DE FRANCE  
EN AFRIQUE DU SUD

*Liberté  
Égalité  
Fraternité*

# CAMPUS FRANCE

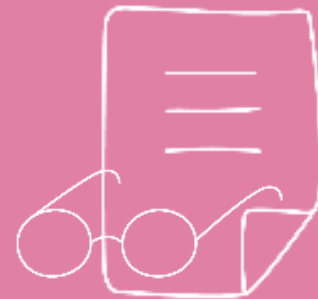
## THE MARK OF FRENCH HIGHER EDUCATION ACROSS THE WORLD

FRENCH AGENCY FOR THE PROMOTION  
OF HIGHER EDUCATION,  
AND INTERNATIONAL MOBILITY

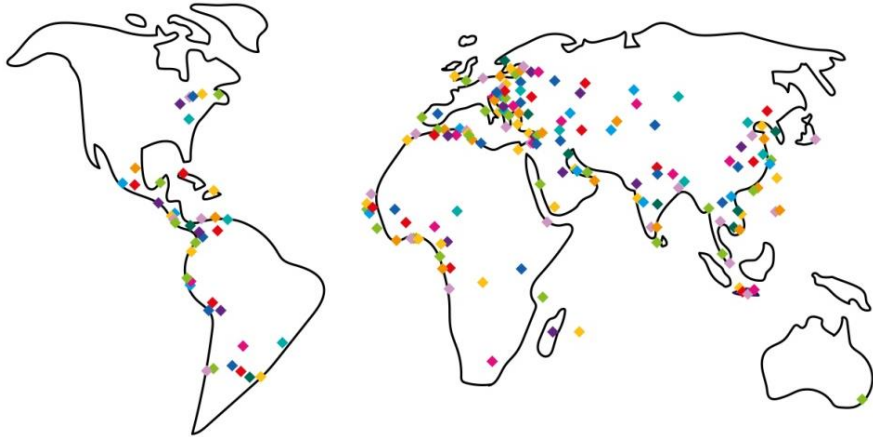


# COMING UP:

- Campus France in South Africa
- Why choose France?
- Degree Equivalences
- Finding the right programme for you
- Funding



# OUR ROLE



## WORLD-WIDE

Promote, Support & Welcome, Manage

## IN SOUTH AFRICA

Promotion and advice;

Practical information:

French system of higher education

Course identification

University & pre-consular visa applications

Pre-departure & arrival preparation



# CAMPUS FRANCE

# 370 000


international students choose France.

## HERE'S WHY...





**WORLD LEADER IN  
RESEARCH & INNOVATION**



# PROJECTS WITH INTERNATIONAL SCOPE AND SCALE







# EXCELLENCE IN HIGHER EDUCATION





# A TOP DESTINATION FOR INTERNATIONAL STUDENTS

A group of young adults are playing a table football game on a rooftop. Two men in the foreground are leaning over the table, focused on the game. In the background, three women are cheering with their arms raised. The scene is set against a clear blue sky with some light clouds. The text "LOW TUITION FEES & A HIGH QUALITY OF STUDENT LIFE" is overlaid in the center in a green, outlined font.

# LOW TUITION FEES & A HIGH QUALITY OF STUDENT LIFE





# THE FRENCH CULTURE, LIFESTYLE AND LANGUAGE



A vintage silver and black camera with a brown leather strap lies on a rustic, teal-painted wooden surface. Several Polaroid photographs are scattered around it. One photo shows a sunset over a field. Another shows two hot air balloons, one yellow and one red, against a sunset sky. A third photo shows a person's legs in blue jeans and sneakers walking on a dirt path. A fourth photo shows a person with a backpack and a hat looking out over a landscape. The text "POSITIONED IN THE HEART OF EUROPE" is overlaid in large, bold, yellow capital letters with a black outline.

# POSITIONED IN THE HEART OF EUROPE

# HIGHER EDUCATION IN FRANCE

# HOW IT WORKS IN FRANCE:

**SEPTEMBER** = Start of the academic year

## LMD SYSTEM

Bachelor's (Licence) → Master's (M1+M2) → PhD

## APPLICATIONS

**DAP: 1st year of Bachelors (L1)**

(October – 15 December)

**HDAP: L2, L3, Master's and PhD**

(October – 31 December)

## APPLICATION PLATFORM

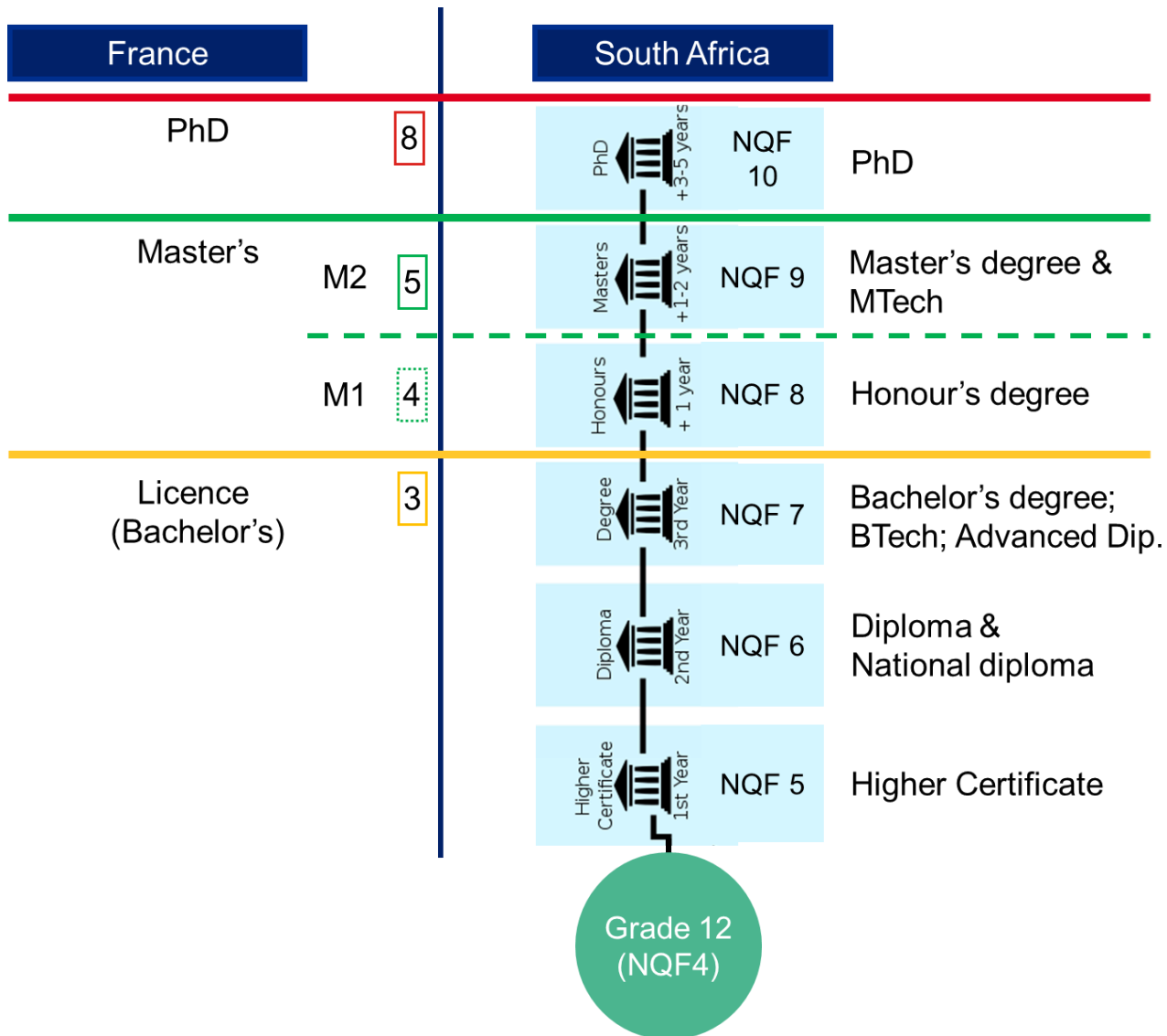
**Etudes en France**

Or on the university website\*



# HIGHER EDUCATION







# Find your DEGREE

WEBINAR



Every  
Wednesday  
**2022**  
MAR-OCT  
at lunchtime

Registration is  
essential:  
[bit.ly/3u4vZmO](https://bit.ly/3u4vZmO)

Study in France

Discover  
English-taught  
Programmes!

# MAY 2022

**20 May – INP Toulouse**  
MSc Programmes

**04 May – Scholarship**

**11 May – Montpellier University**  
All Master's programmes taught in English

**18 May – Sciences Po (Paris)**  
Masters programme

**25 May – Paris Saclay**  
International Master « Development of Drugs  
& Health Products »

# WEBINAR SCHEDULE

# 1600+ PROGRAMMES



## CATALOGUE

### English course catalogue

\*Mostly only available at Masters and PhD level

## SEARCH FOR:

- Level and field of studies
- Key word
- **100% Taught in English**
- Location in France
- Bienvenue en France label

## APPLICATIONS:

Etudes en France platform

Or directly to the university



# STUDY IN ENGLISH!



Search



## Filters



Level of degree sought



Fields



- ☐ Business and Management
- ☐ Tourism, Hotel and Catering Management
- ☐ Sciences, Environment, Health Science
- ☐ Agriculture and Agroindustry
- ☐ Mathematics
- ☐ Engineering and Technology
- ☐ Law, Economics
- ☐ Humanities, Languages, Literature
- ☐ Architecture, Arts, Design, Fashion



100% Taught in English

- ☐ Yes ☐ No



Type of degree

- ☐ National diploma
- ☐ National fees



Label Welcome to France

- ☐ Yes

→ 1700 programs

Active filters:

List

Geographic region

### [Online] Winter Program - Sport Federations and Events Management

NEOMA Business School

Reims et Rouen - Alsace Champagne-Ardenne Lorraine



### 100 % ANG/ENG - Fluids: Master of Science in Fluids Engineering for Industrial Processes

Institut National Polytechnique de Toulouse

Toulouse - Languedoc-Roussillon Midi-Pyrénées



### 100 % ANG/ENG - Green Cap: Master of Science Green Chemistry and Processes for Renewable Feedstocks

Institut National Polytechnique de Toulouse

Toulouse - Languedoc-Roussillon Midi-Pyrénées



### 100 % ANG/ENG - Master Industrial BioTechnology for a Bio-Based Economy (BioTechEco)

Institut National Polytechnique de Toulouse

Toulouse - Languedoc-Roussillon Midi-Pyrénées



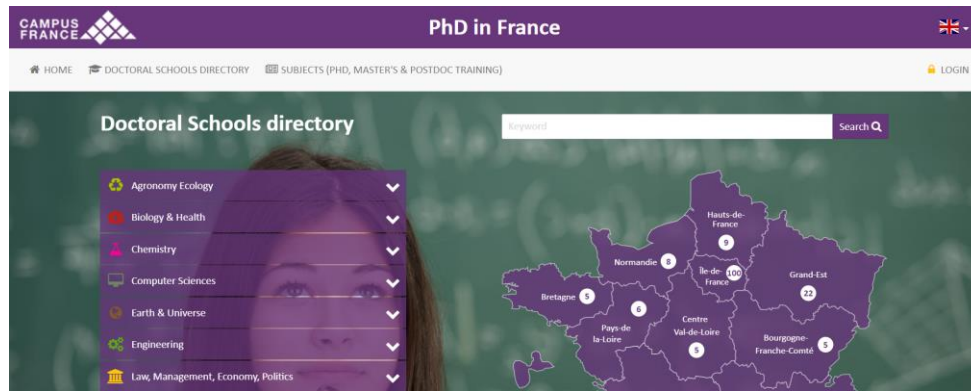
### 100 % ANG/ENG - Master of Science for Electronic Systems for Embedded and Communicating Application (ESECA)

Institut National Polytechnique de Toulouse

Toulouse - Languedoc-Roussillon Midi-Pyrénées



# FIND RESEARCH OPPORTUNITIES



## CATALOGUE PhD/ Research offers in France

### SEARCH ACCORDING TO:

- Field
- Key word
- Location

### APPLICATIONS:

Directly to the university or institution



# PHD & RESEARCH

## Subjects (PhD, Master's &amp; Postdoc training)

Keyword

Search

Delete all filters

- Type (Contract / Grant) ✕
- Funding ✕
- Doctoral program ✕
- Category (PhD / Master's / Postdoc) ✕
- Domains & disciplines ✕
- Regions ✕
- Institution, university... ✕
- Doctoral school ✕
- Annual tuition ✕
- Duration ✕
- Languages ✕



Click here to see the offers

616 offres

1 / 62

Creation date ↓



## Realisation of multilayer on textile for human body infrared reflexion

D-72

ENSAIT DE ROUBAIX | TEXTILE ENGINEERING AND MATERIALS LABORATORY (GEMTEX)

Chemistry Engineering Hauts-de-France Doctorate

The POCOMA project aims at developing passive polymer membrane for clothing in order to improve the thermal comfort felt by a person at rest through the control of Mid-InfraRed (Mid-IR) radiation. Indeed, at rest, 50% of the heat loss of the human body is due to radiative loss in the Mid-IR range (5...

Application deadline 15/05/22

01/09/22 ANR 1 540 € C1

Offer CF202223388 - Created on 03/03/22



## Boron and Lewis acid catalysis.

D-42

ENSICAEN | LABORATORY OF MOLECULAR AND SULFO-ORGANIC CHEMISTRY (L.C.M.T.)

Doctoral program in chemistry of Normandy (ED 508)

Chemistry Normandie Doctorate

As part of the ecological transition and more generally towards a more sustainable production model, the development of new catalytic processes that do not use metals is a particularly competitive field of research. In this context, the UMR 6507 CNRS LCMT in Caen offers a research program aimed at d...

Application deadline 15/04/22

01/10/22 36 Months Contrat Doctoral 1 500 € C1 C1

Offer CF202223371 - Created on 03/03/22



## Design of wavelength-selective thermal emitters for very low-gap thermophotovoltaic conversion

D-149

UNIVERSITE DE POITIERS | P' INSTITUTE: RESEARCH AND ENGINEERING IN MATERIALS, MECHANICS, AND ENERGETICS (PPRIME)

Sciences et Ingénierie des Matériaux, Mécanique, Énergétique - (ED 609)

Engineering Physics Nouvelle-Aquitaine Doctorate

The objective of the thesis is to propose, fabricate and characterize wavelength-selective radiative emitters in order to optimize the thermoelectric conversion by very low gap thermophotovoltaic cells (from 0.36 to 0.17 eV) and based on InAs/InAsSb superlattices. This involves being able to convert...

Application deadline 31/07/22

ASAP 36 Months ANR 1 800 € C2

Offer CF202223370 - Created on 03/03/22



## Study of the optomechanical coupling on glass microtubes: transfer of electromagnetic momentum to transparent objects

D-43

# COTUTELLE (PHD)

## WHAT IS A COTUTELLE?

= co-supervision agreement between a supervisor in your country and one in France.

- Enrolment in two universities
- Degree from French uni (joint degree)
- Unique agreement!

## HOW TO SET UP A COTUTELLE:

- ☐ Apply to a university in SA
- ☐ Identify a French supervisor/ institution
- ☐ Request & attain agreement for co-supervision.
- ☐ Local & French institutions draw up cotutelle agreement for you.



# PHD & RESEARCH



# FUNDING

# FIND & APPLY FOR FUNDING



## CATALOGUE

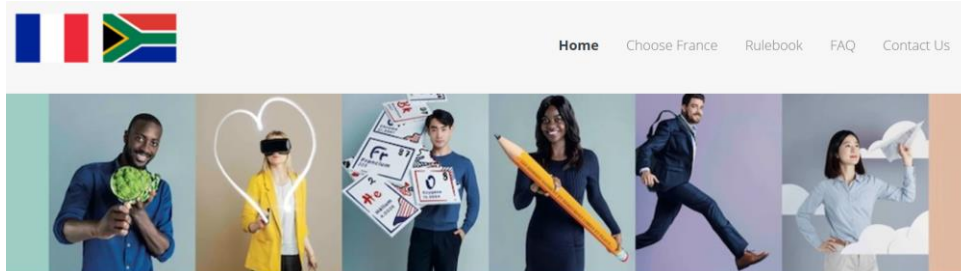
Search for scholarships to apply to:  
[campusbourses.campusfrance.org](https://campusbourses.campusfrance.org)

## SEARCH ACCORDING TO:

- Type of grant (study, research, etc)
- Subject area
- Nationality
- Funding organisation (French gov., EU, Research bodies, etc)



# POSTGRAD SCHOLARSHIP



France - South Africa Scholarship Programme

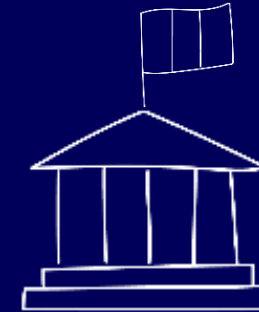
**Master's & PhD in France, all fields of study!**

## REQUIREMENTS:

- Citizen of: SA, Lesotho or Malawi
- Under 33 year's of age
- NO prior knowledge of French

## APPLICATIONS:

April – mid-October (for the next year)  
[southafrica-france-scholarships.com](http://southafrica-france-scholarships.com)



# EMBASSY OF FRANCE

# DETAILS



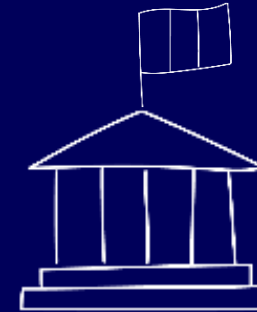
**AMBASSADE  
DE FRANCE  
EN AFRIQUE DU SUD**

*Liberté  
Égalité  
Fraternité*



## INCLUDES:

- ✓ Monthly stipend
- ✓ Social Security
- ✓ Priority access to student housing (CROUS)
- ✓ Round-trip flight tickets
- ✓ Visa fees
- ✓ French lessons
- ✓ Internship before departure
- ✓ Tuition fees (up to 5000€ per year)



**FRANCE –  
SOUTH AFRICA  
Scholarship Programme**

# DOCUMENTS

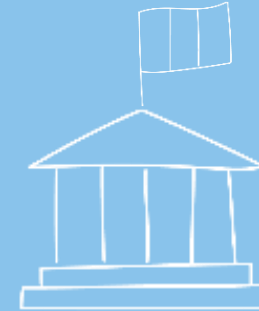
[www.southafrica-france-scholarships.com](http://www.southafrica-france-scholarships.com)

## REQUIRED

- ☐ Copy of passport *\*or ID*
- ☐ Résumé / CV (1 page)
- ☐ Motivation / cover letter (preferably 1 page)
- ☐ Copies degree certificates;
- ☐ Academic records
- ☐ Master's / phd documents (next slide)

## OPTIONAL

Academic and/or professional recommendations;  
Proof of French language proficiency (if relevant)



**FRANCE –  
SOUTH AFRICA  
Scholarship Programme**



# DOCUMENTS (CONT.)

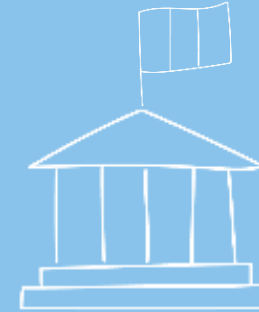
[www.southafrica-france-scholarships.com](http://www.southafrica-france-scholarships.com)

## MASTERS

- ☐ Proof of communication with university + application timeline
- ☐ List of chosen study programmes (max 3).

## PHD

- ☐ Letter of support from supervisor(s)
- ☐ Detailed description of the research project (2/3 pages) including a detailed work plan;
  - ☐ If cotutelle, a detailed plan of the various periods to be spent in France.



**FRANCE –  
SOUTH AFRICA  
Scholarship Programme**

# APPLICATION TIPS

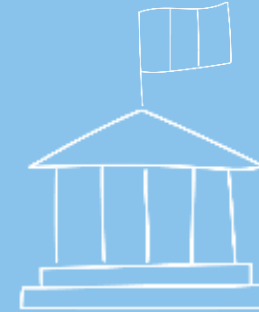
[www.southafrica-france-scholarships.com](http://www.southafrica-france-scholarships.com)

## GENERAL

- ✓ Read the homepage, rulebook and faqs!
- ✓ Tailor your motivation letter
- ✓ Keep your CV and motivation letter short (1 page)
- ✓ Choose 3 programmes to study in france and remember to rank them by order of preference

## REMEMBER:

You will need to complete your university applications on your own, after submitting your scholarship application!



**FRANCE –  
SOUTH AFRICA  
Scholarship Programme**

# APPLICATION TIPS

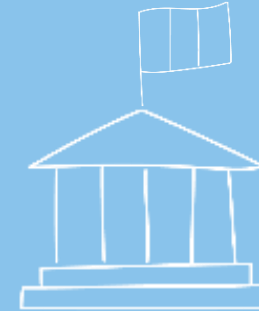
[www.southafrica-france-scholarships.com](http://www.southafrica-france-scholarships.com)

## ENROLMENT IN A FRENCH INSTITUTION OF HIGHER EDUCATION.

### What does this mean?

- ✓ 3 choices, max.
- ✓ Proof of communication with each programme (emails, attendance of webinars, etc)

**If you are shortlisted for the scholarship,**  
You will need to be accepted at one of your  
programmes **before** your scholarship can be  
confirmed.



**FRANCE –  
SOUTH AFRICA  
Scholarship Programme**

# MERCI !



# GAIL VERMAAK

*Responsable de / Manager of*  
Campus France in South Africa

**[southafrica.campusfrance.org](http://southafrica.campusfrance.org)**  
**[southafrica@campusfrance.org](mailto:southafrica@campusfrance.org)**  
**062 129 6865 // 012 425 1613**  
**social media: @campusfranceza**

